

# JF250GK SERIAL ASSEMBLE MANUAL

SHANGHAI JINFENG MOTOR CO., LTD

SEPT. 8 2005

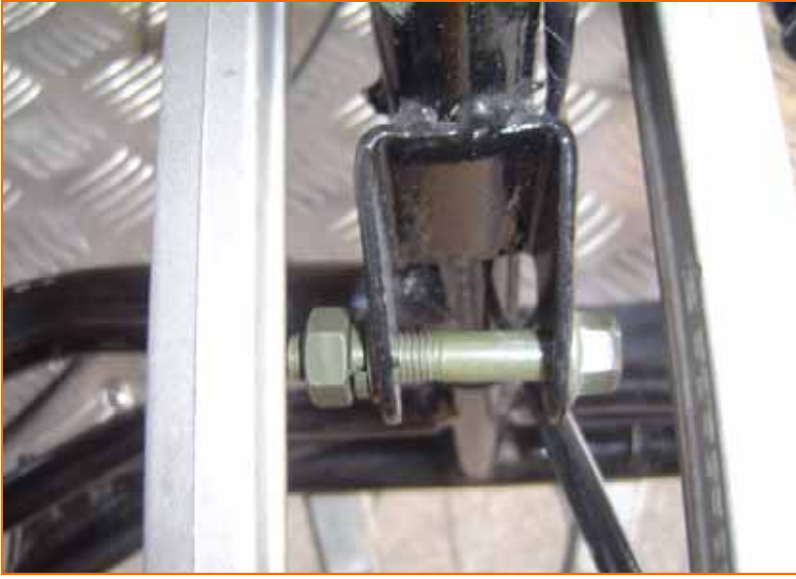
## ( one ) Dismantle package



- 1.loosen the bolts around the steel frame.  
(as the left photo)
- 2.take off the up steel frame  
(as the second photo)
- 3.loosen the bolts on the bottom frame.  
(as the right two photo)



## ( two ) Assemble front shock absorber



1. take off the bolt and nut as the left photo.



2. put in the shock absorber, and lock the bolt on the nut.

### ( three ) Assemble rear shock absorber



1. take off the bolt and the nut.



2. put in the shock absorber, and lock the bolt with nut.

## ( four ) Assemble front wheel



1. take off the 5 bolts and the dustproof cover. (as the left photo)



2. fit on the front wheel, lock the nut, and fix on the dustproof cover

## ( five ) Assemble rear wheel



1. take off the 5 bolts and the dustproof cover. (as the left photo)



2. fit on the rear wheel, lock the nut, and fix on the dustproof cover



## ( six ) Assemble steering wheel



fix on the steering wheel , and lock the bolt .

## ( seven ) Assemble the direction controller joint



1. take off the bolt and the pin.



2. fix the ball, lock the nut and fix the pin.

## ( eight ) Assemble bracket of radiator



stick up the radiator bracket, and fix it with the supporting pole. Then lock the bolt and the nut.

## ( nine ) Assemble water cooler



fix the radiator and lock the bolts and nuts.

## ( ten ) Assemble water jug



1. put the assistant water tank on the bracket and lock the bolt.



2. Fix the assistant water tank with the water inlet, and lock the pipe clip.

## ( eleven ) Assemble pipe of water cooler



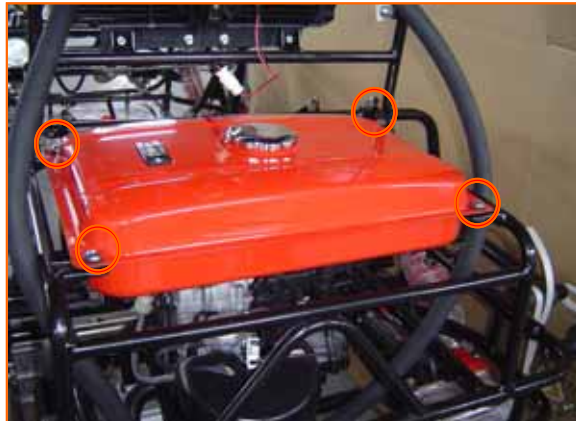
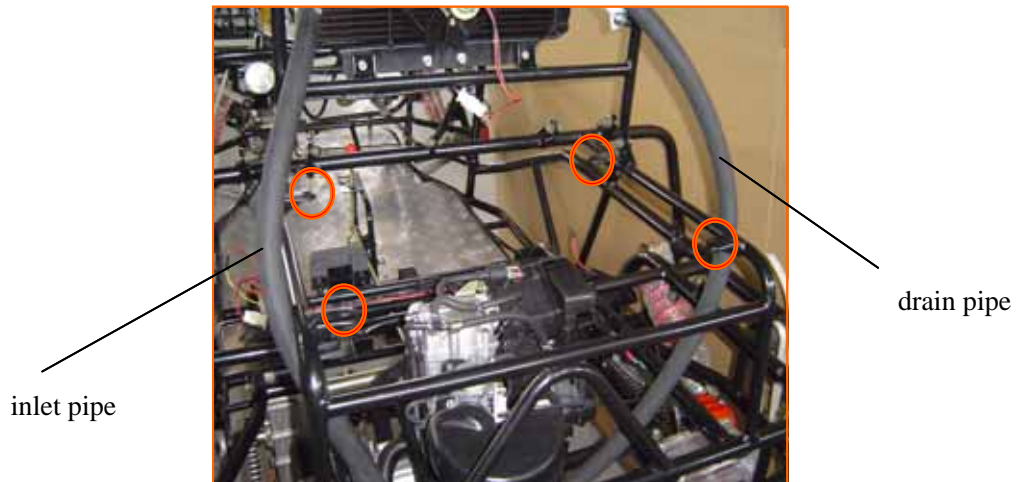
fix the water inlet and drainpipe on the water tank, then lock the pipe clip.

## ( twelve ) Connect fan with the wire



- 1.fix the fan wire joint.
- 2.fix on the temperature sensor wire joint.

## ( thirteen ) Assemble fuel tank



1. fix the oil tank on the bracket, and lock the bolt.

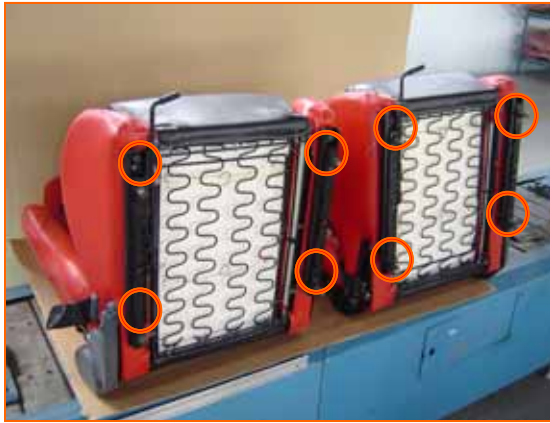


2. fix the oil pipe on the carbuter, and lock the pipe clip.

## ( fourteen ) Assemble the tracks of the seats

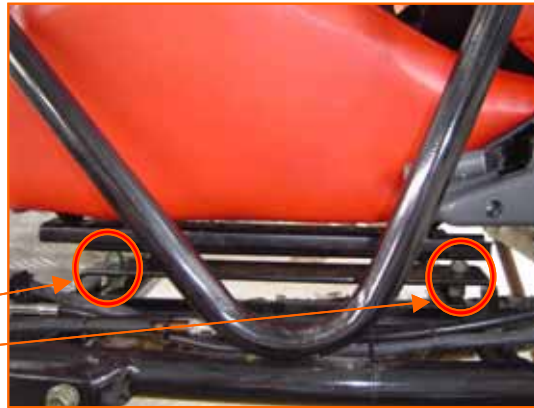
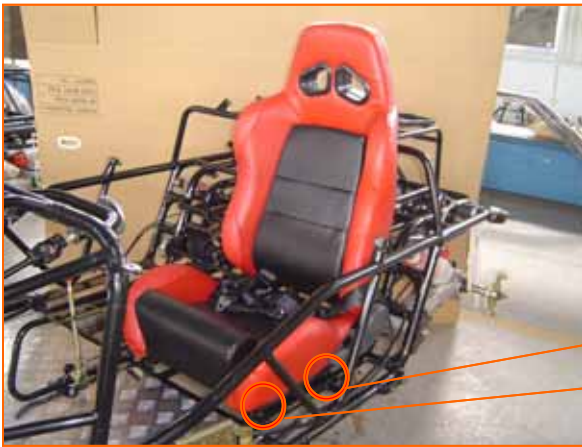
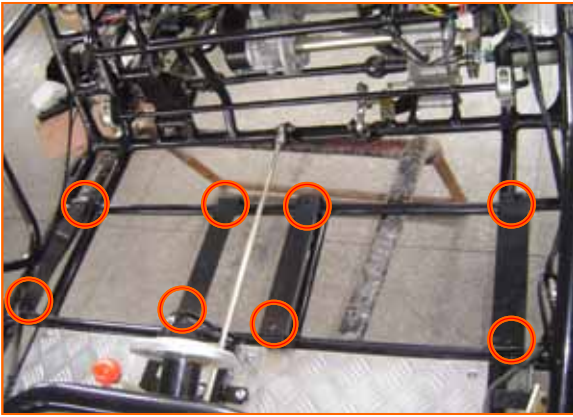


1. Take off the bolts on the bottom of the seats.



2. fix the seat track on the seat, then lock the bolt.

## ( fifteen ) Assemble seats



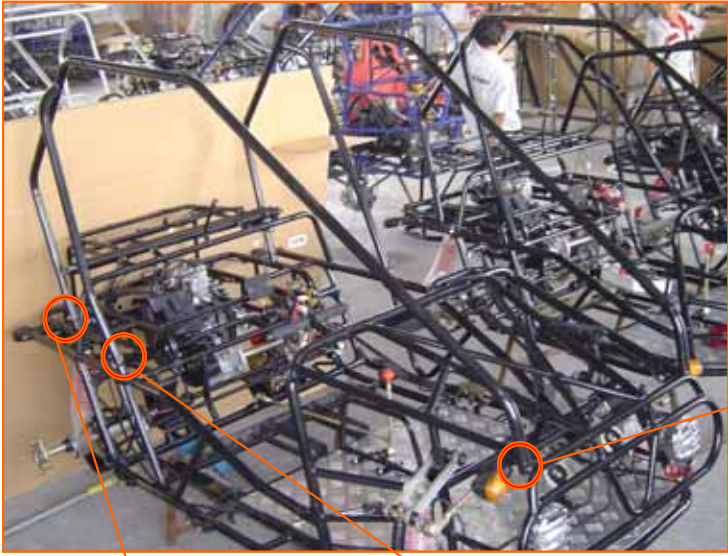
1. Take off the fixing bolts.
2. fix the seats on the frame, and lock the bolts.

## ( sixteen ) Assemble safty belt of seat



1. take off the bolts and nuts on the safe belt.
2. fix the safe belt on the bracket, and lock the bolts and the nuts.

## (seventeen) Assemble roll cage bar



1. Take off the bolts 1,2,3(on the both sides of the frame).
2. To fix the side brackets on the frame.

## ( eighteen ) Assemble roll cage cross bar

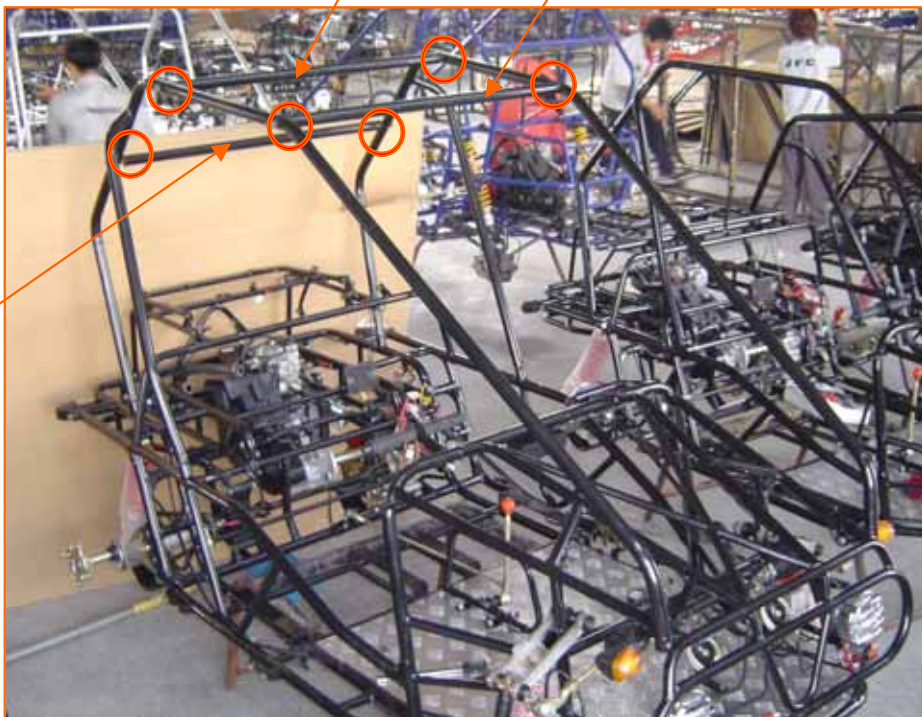


中间横撑 (长 : 895mm)

1.front across pole, length 860mm

2.the middle across pole, length 895mm

前横撑 (长 : 860mm)



后横撑  
(长 : 910mm)

3.rear across pole  
length 910mm

1.take off the bolts on both ends.

2.fix the supporting pole on the brackets in order 1,2,3, and lock the bolt.

## ( nineteen ) Assemble rear mirror



take off the nut on rearview mirror,  
fix the rearview mirror on the  
bracket, and lock the nut.



## ( twenty ) Assemble front fender



1. Fix the fenders and the brackets.



2. fix the fenders on the brackets,  
and lock the bolt.

## ( twenty-one ) Assemble rear fender



1. Fix the fenders and the brackets.



2. fix the fenders on the brackets,  
and lock the bolt.

## ( twenty-two ) Assemble storage battery



1. To fix the washers.



2. To fix the battery.



3. To connect the two poles on the battery, and lock the bolt.



4. cover the battery cover, and fix the battery with bind.