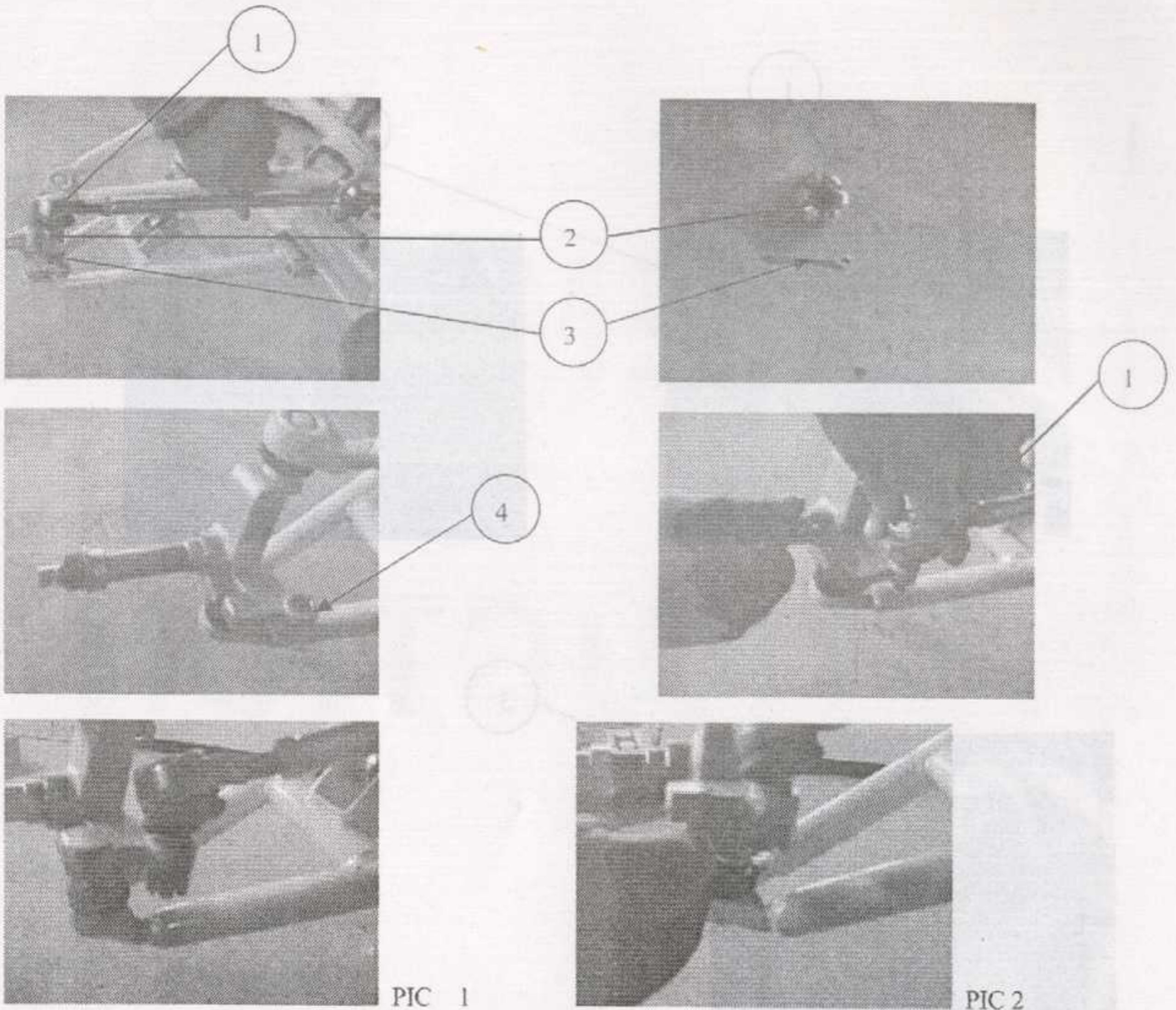


PIC 1

NO	DESCRIPTION	SIZE	REMARK
1	Holder,front shock		On the frame
2	Screw	M10*45	On 1
3	Front shock		On the bike

1. Take of 1 from 2
2. Fix 3 with 1, and fix 2 through 3 and 1 from front to back., lock it as PIC 1
3. The same operate of front and right

## STEP 2: FIX THE TURNING SHAFT



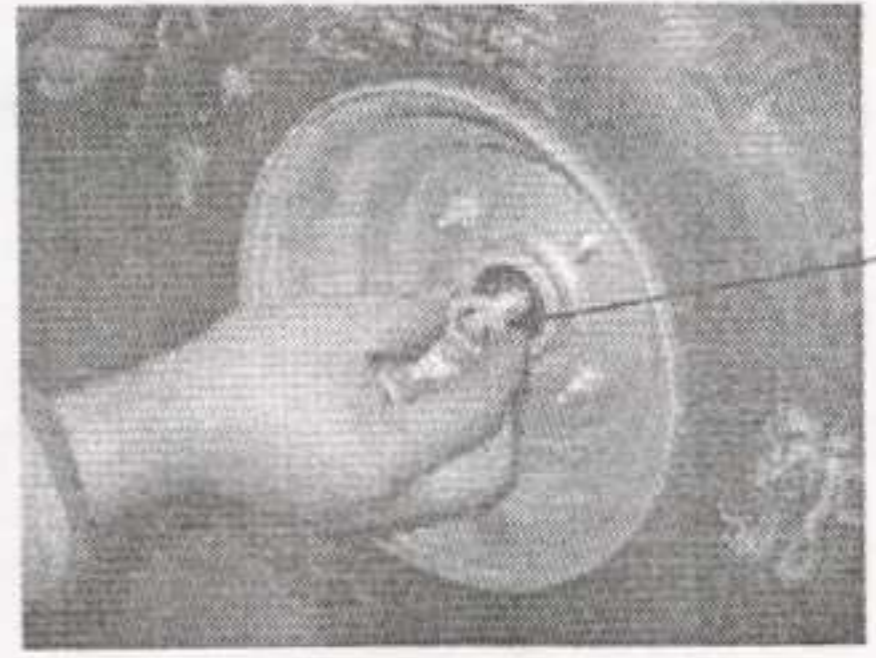
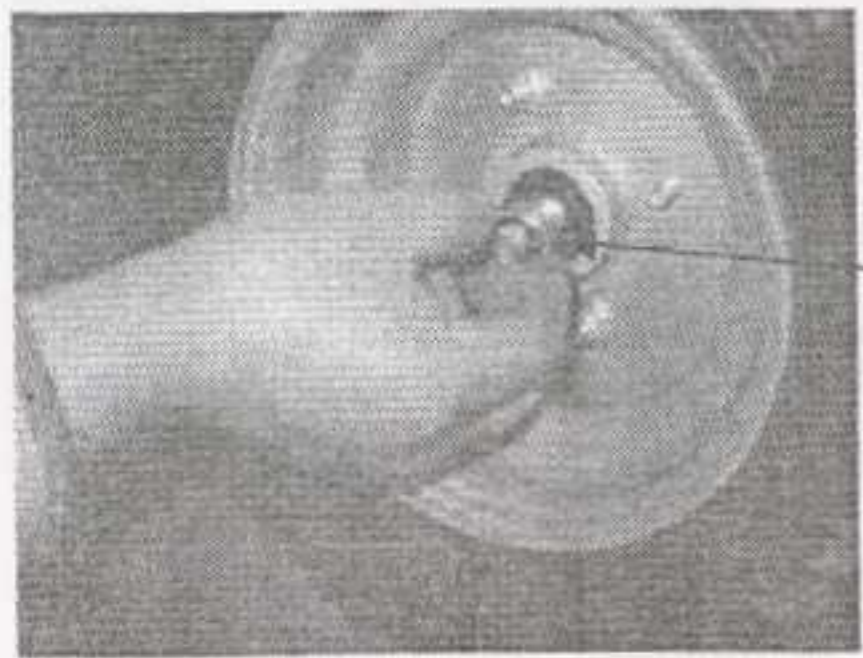
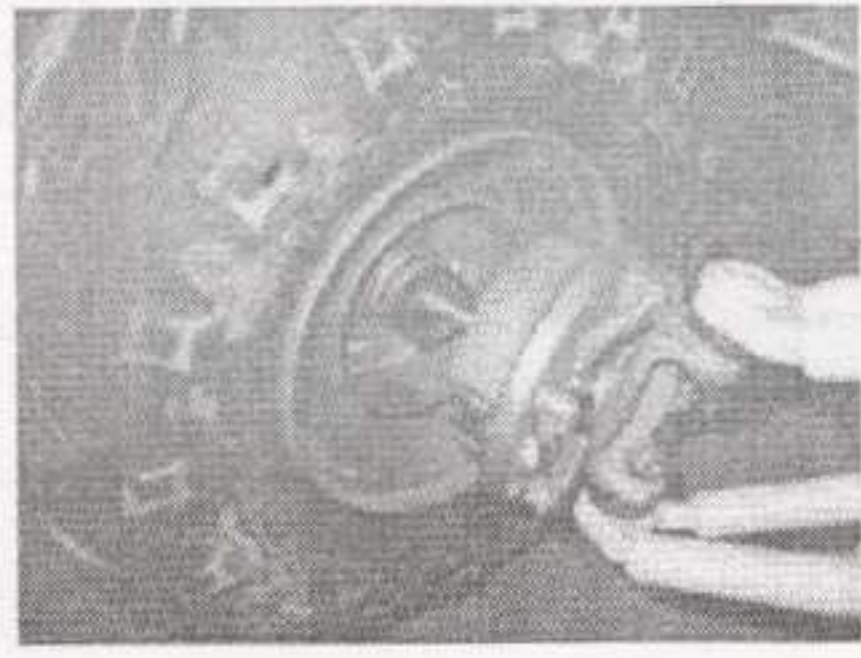
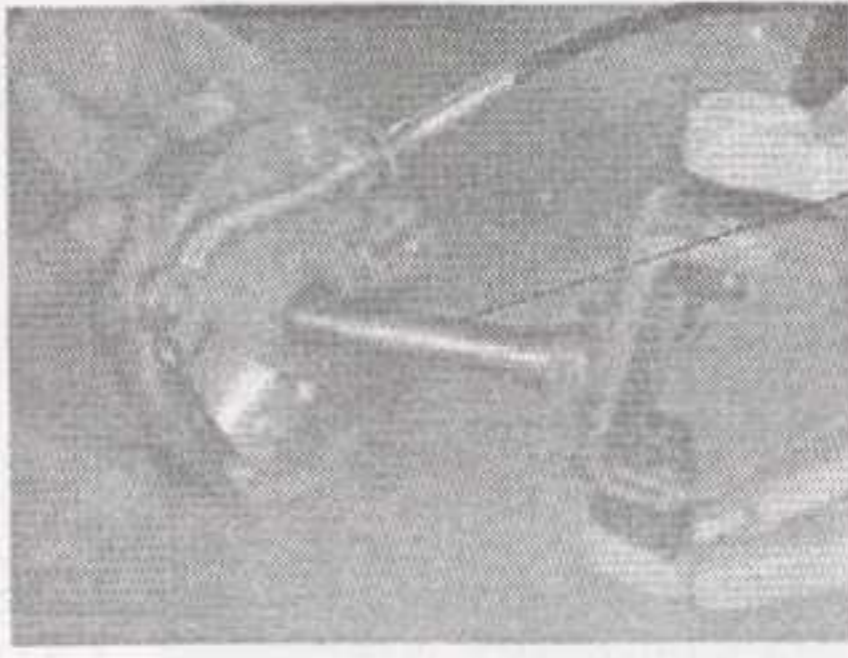
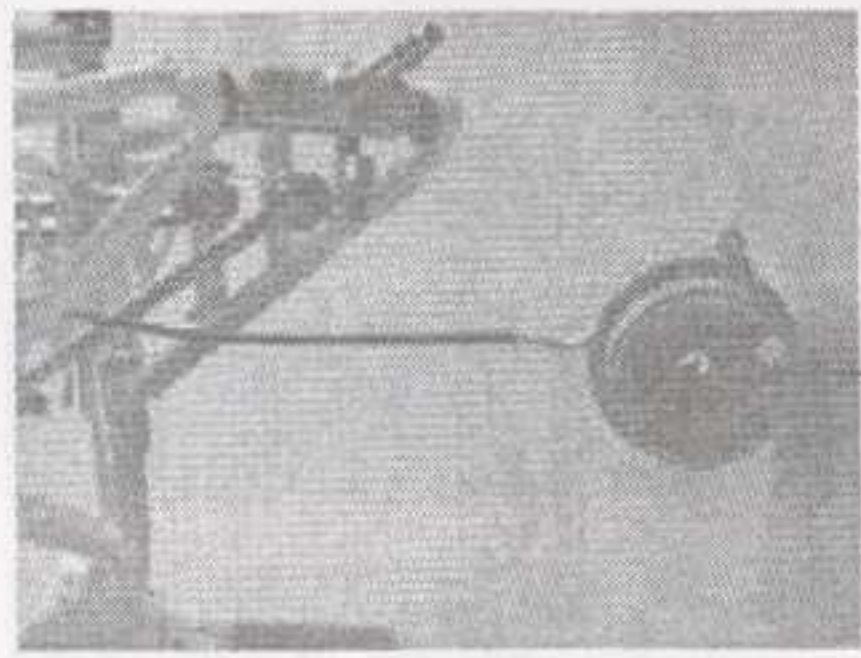
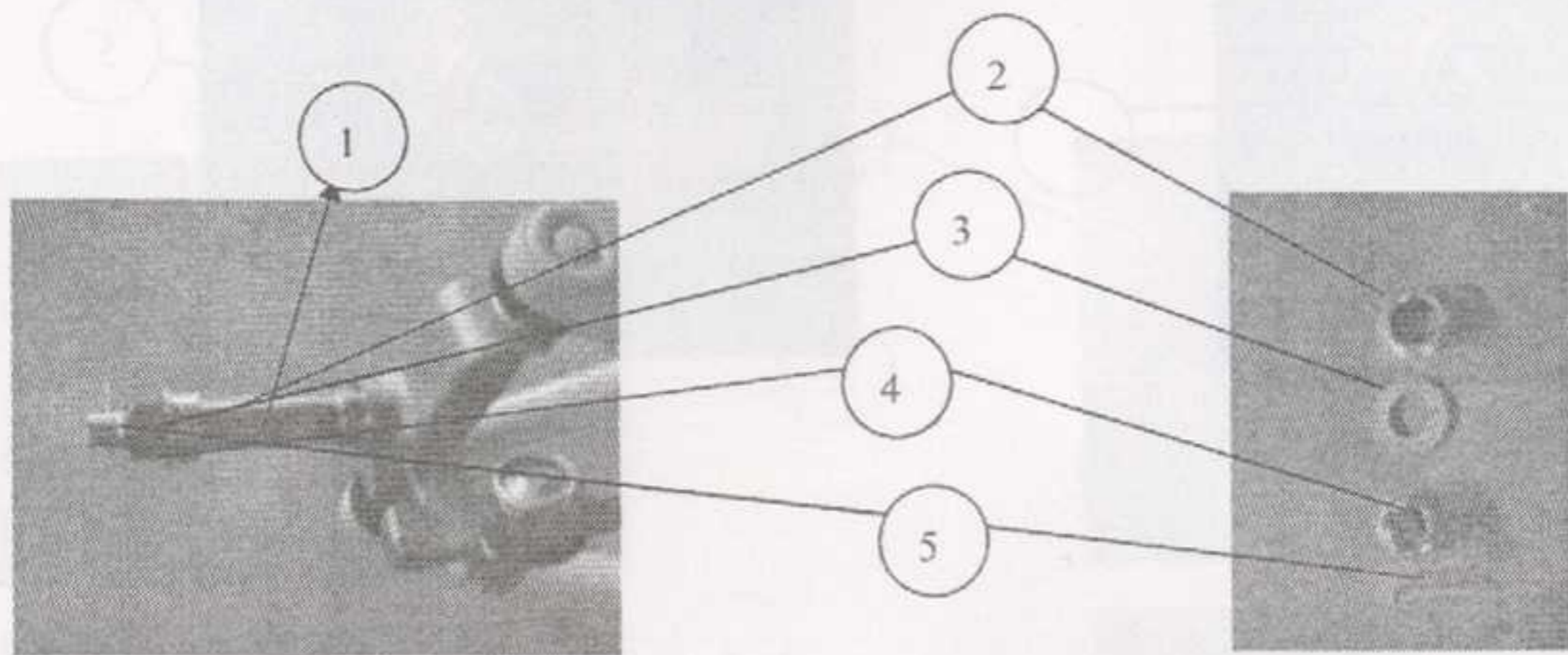
PIC 1

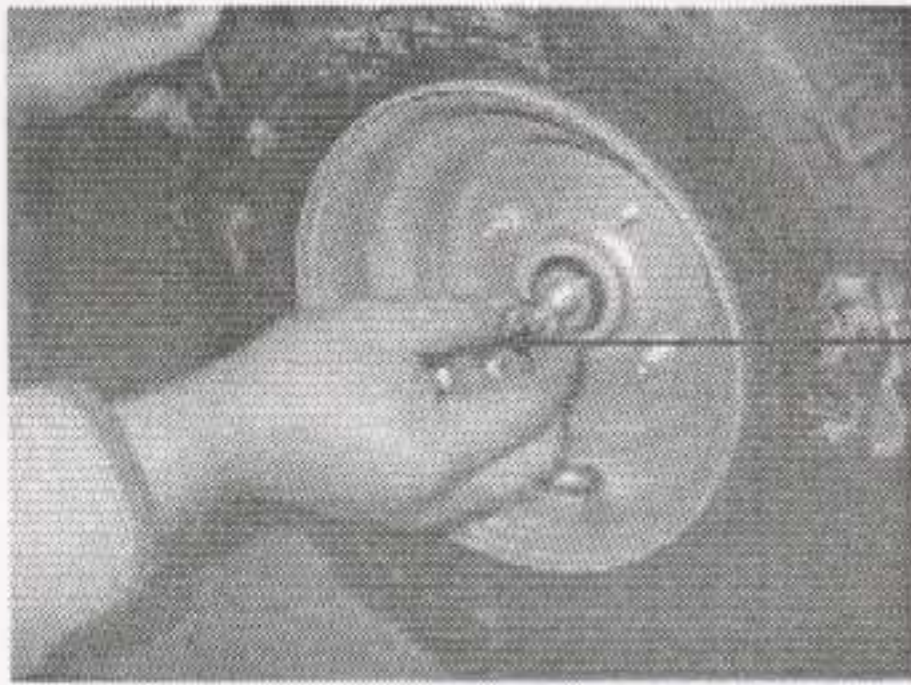
PIC 2

NO	DESCRIPTION	SIZE	REMARK
1	TURNING SHAFT		On the bike
2	HEX CONCAVE NUT	M10	On 1
3	SPLIT PIN	2MM	On 1
4	TRIFURCATE SHAFT		On the bike

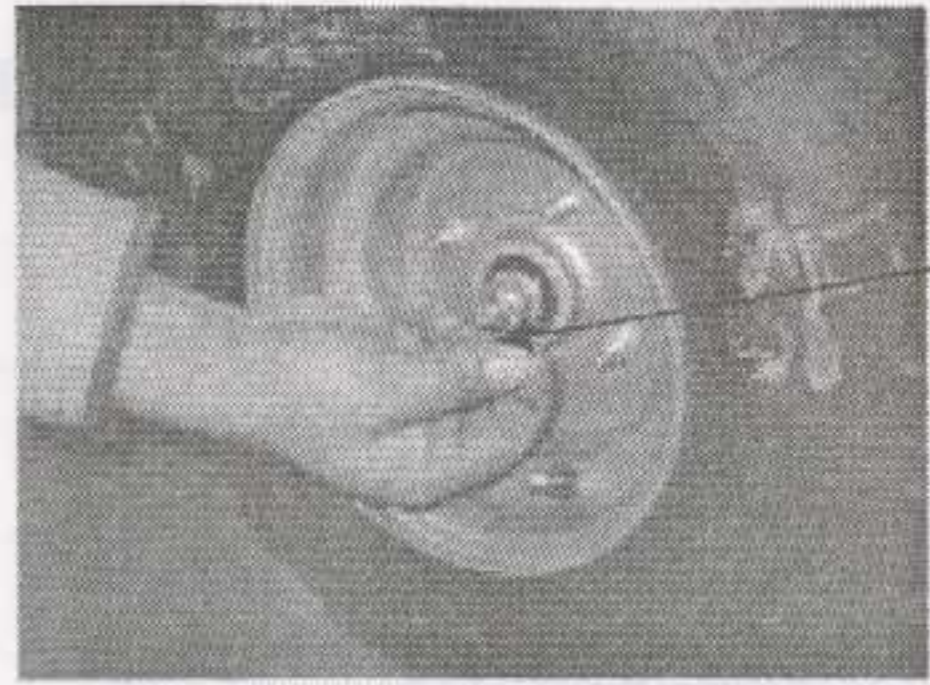
1. Take off 2 and 3 from 1
2. Put 1 go through up to down
3. Use 2 lock it, as PIC 1
4. And then put 3, orientation it, as PIC 2
5. The same operate of right and left

# STEP 3: FIX THE LEFT AND RIGHT FRONT WHEEL





4

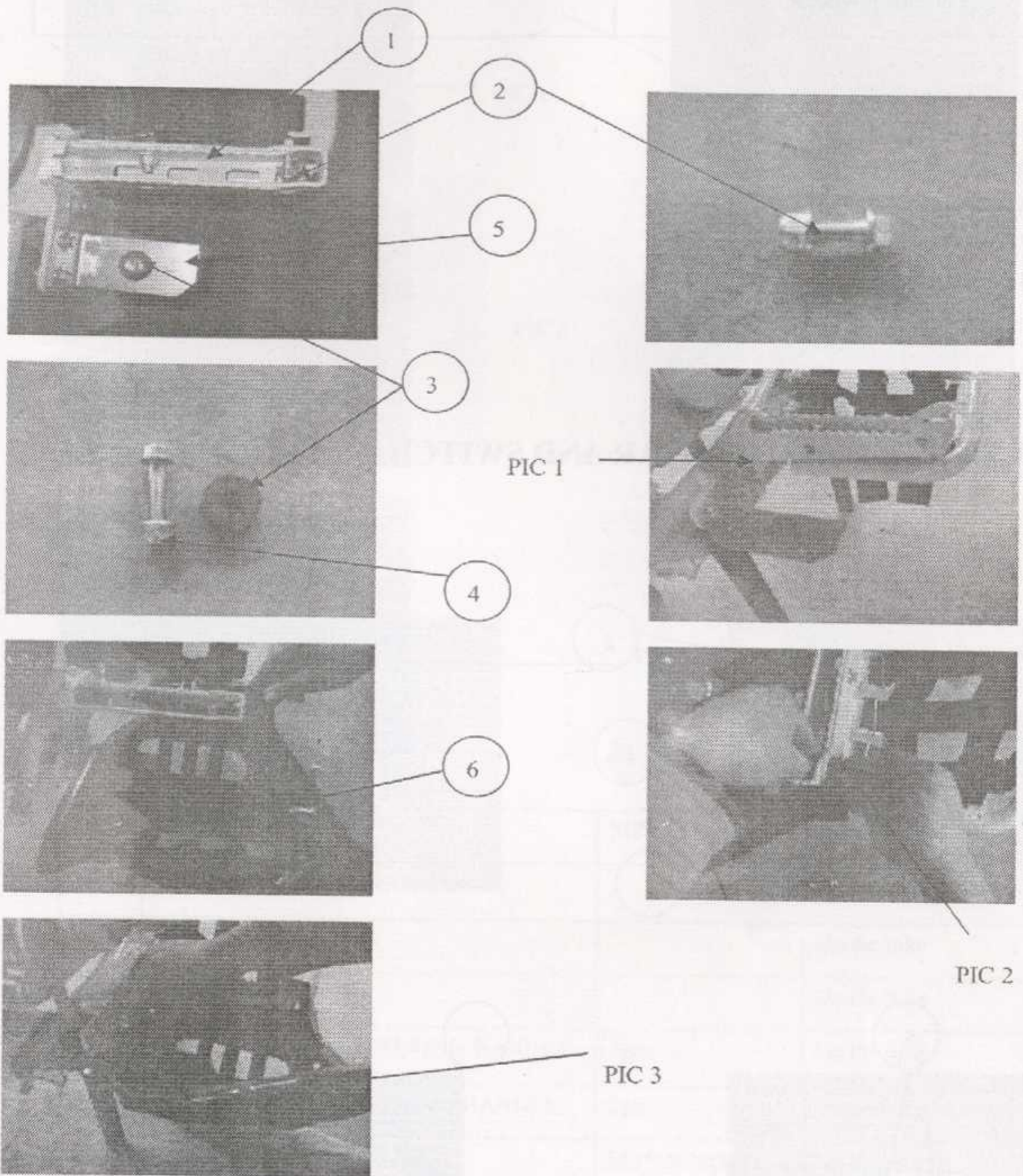


5

NO	DESCRIPTION	SIZE	REMARK
1	TRIFURCATE SHAFT		On the bike
2	SPACER		On 1
3	PLANE WASHER		On 1
4	HEX CONCAVE NUT	M14	On 1
5	SPLIT PIN	2mm	On 1
6	DRUM OF FRONT WHEEL		On the bike
7	FRONT WHEEL ASSY		On the bike

- 1 Take off 2.3.4.5 from 1
- 2 Put 6 in 1. make sure 6 insert 1. as PIC 1
- 3 Put 7 in 1, then fix 2.3, use 4 lock it, the last, use 5 insert it,
- 4 The same operate of front and right.

# STEP 4: FIX LEFT AND RIGHT BOARD OF ORNAMENT



NO	DESCRIPTION	SIZE	REMARK
1	Footrest		On the bike
2	Flange screw	M8*20	On the bike
3	Rubber	M8	On the bike
4	Flange screw	M8*35	On the bike

5	Fixing pad for footrest protector		On the bike
6	Footrest protector		On the bike

1. Take off 2 from 1
2. Take 3,4 from 5
3. Put 3 on 5, as PIC 1
4. Put 6 on 1 and 5
5. Put 2 go through front to back and lock it
6. Put 4 go through up to down and lock it

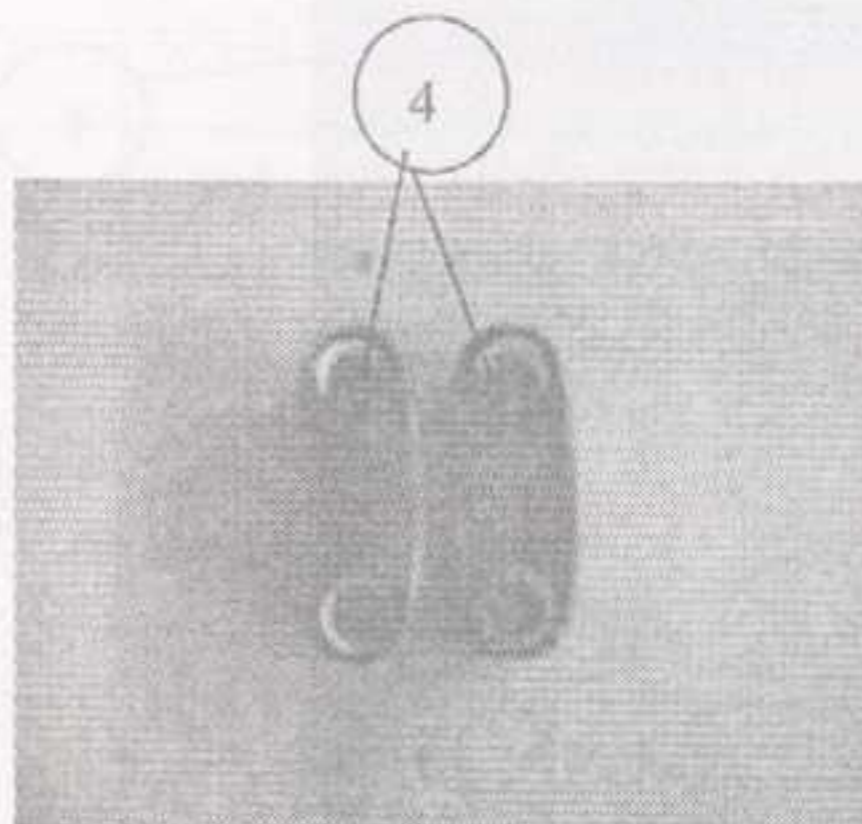
## STEP 5: FIX THE HANDLEBAR AND SWITCH



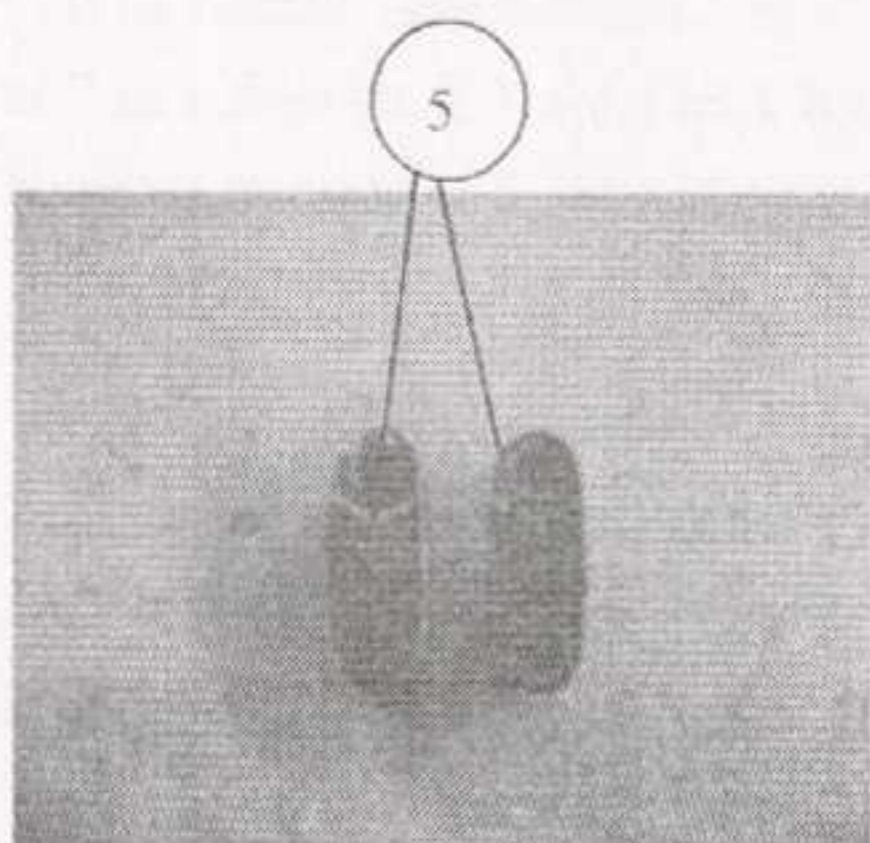
2

1

3

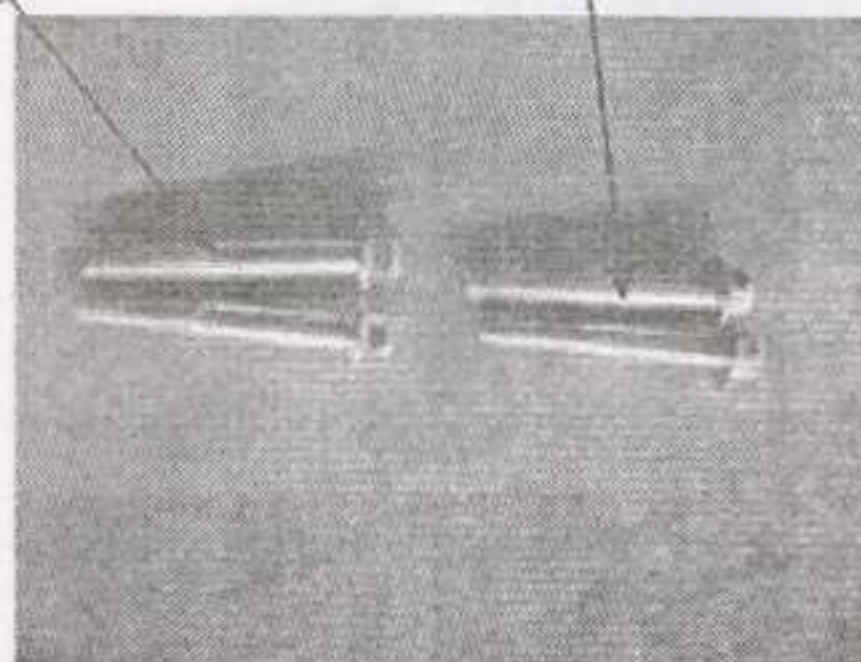


4

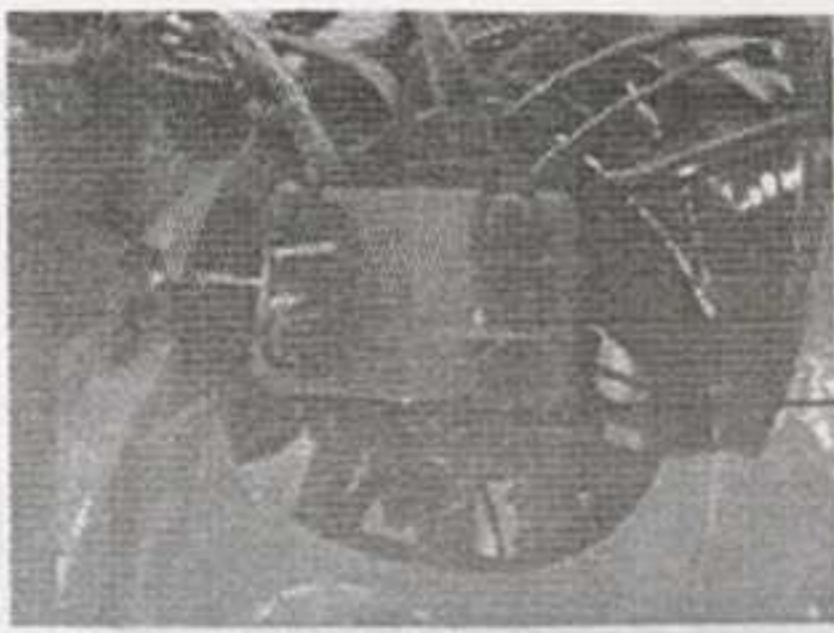


5

7

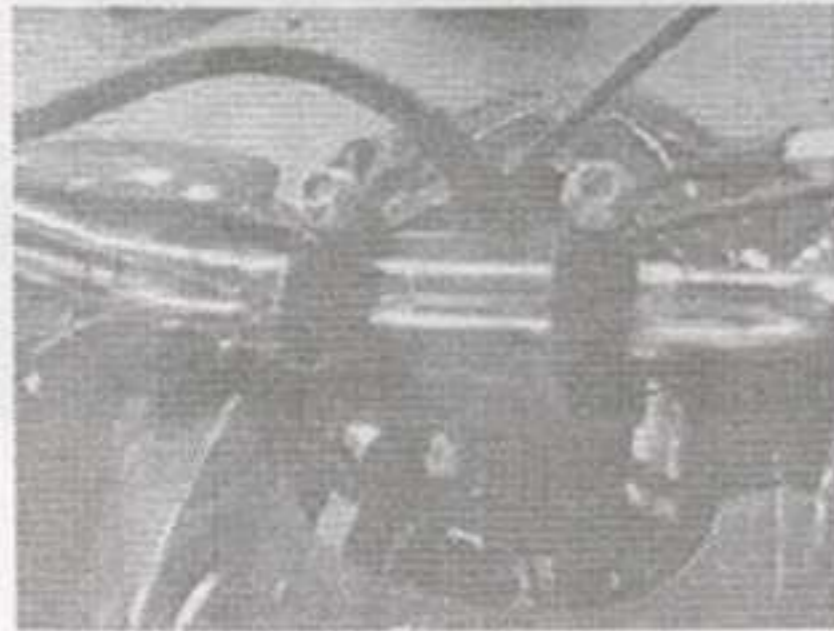
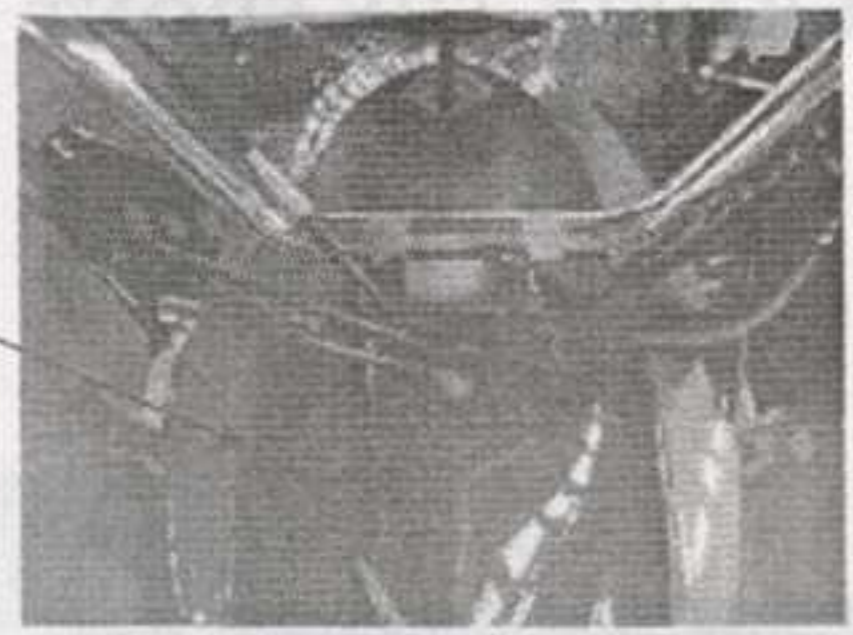


6



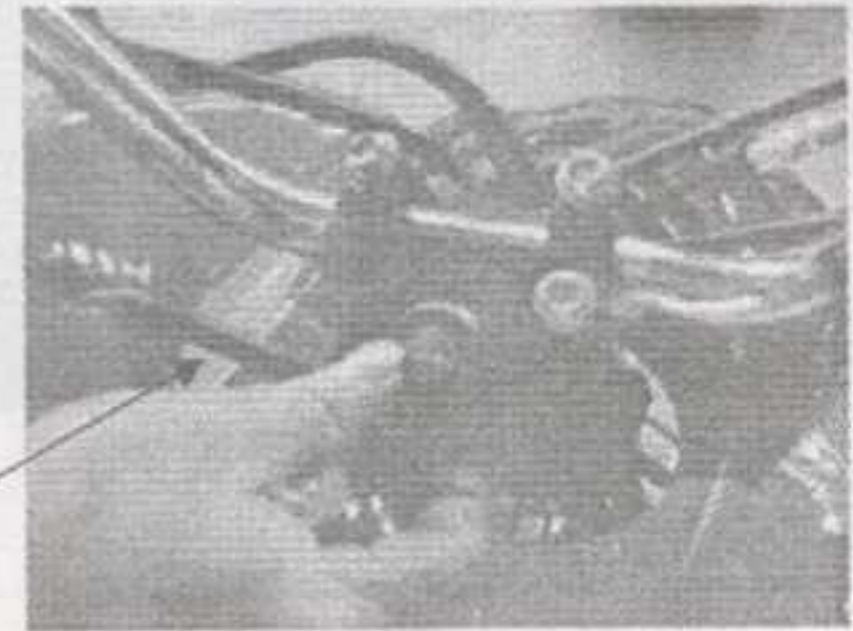
PIC 2

PIC 1



PIC 3

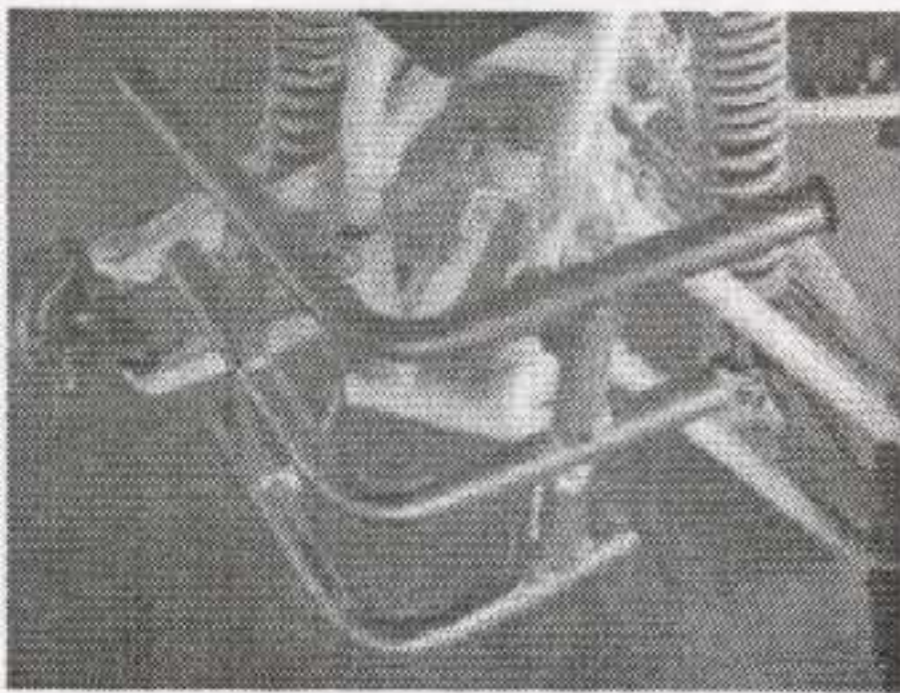
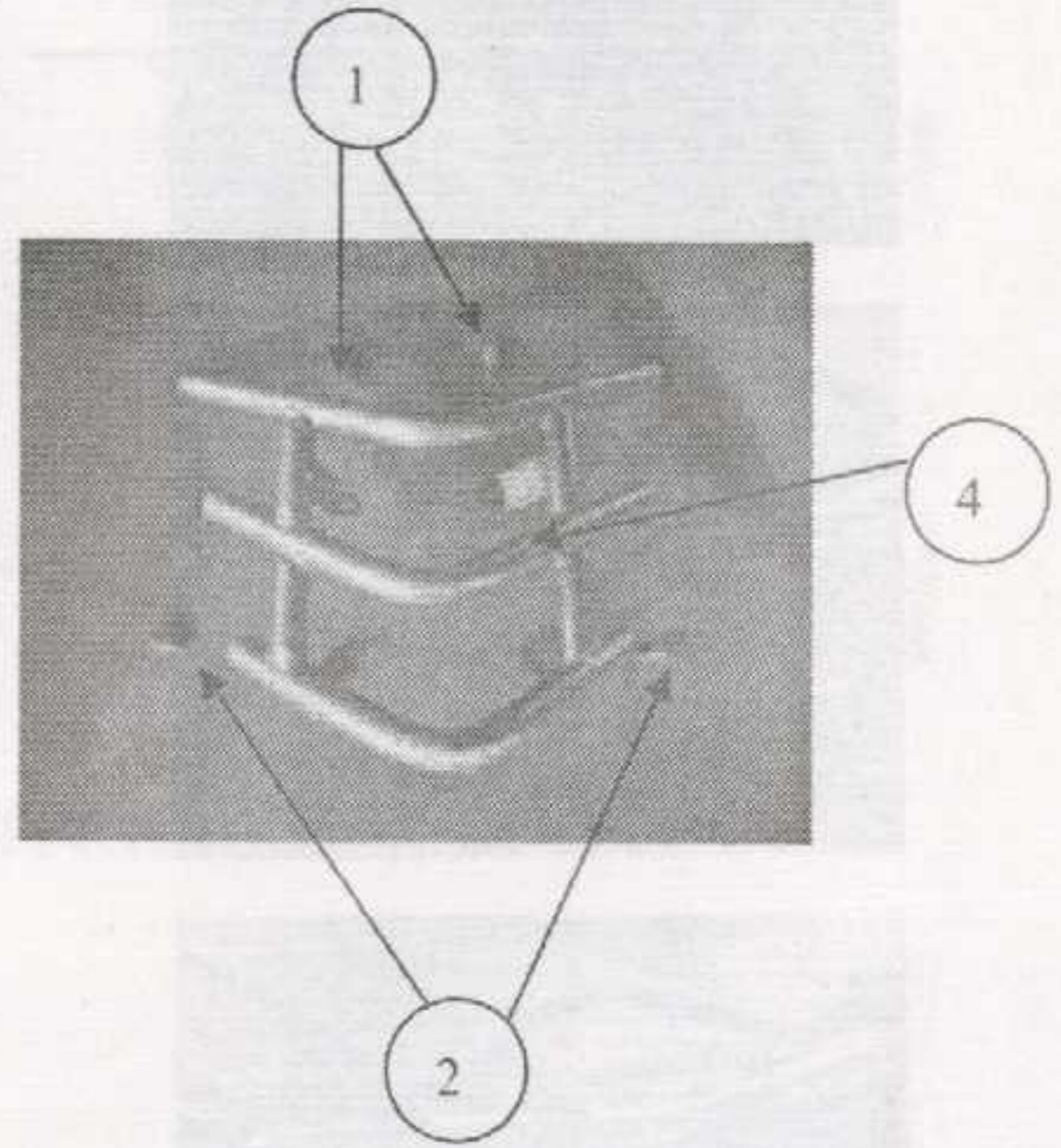
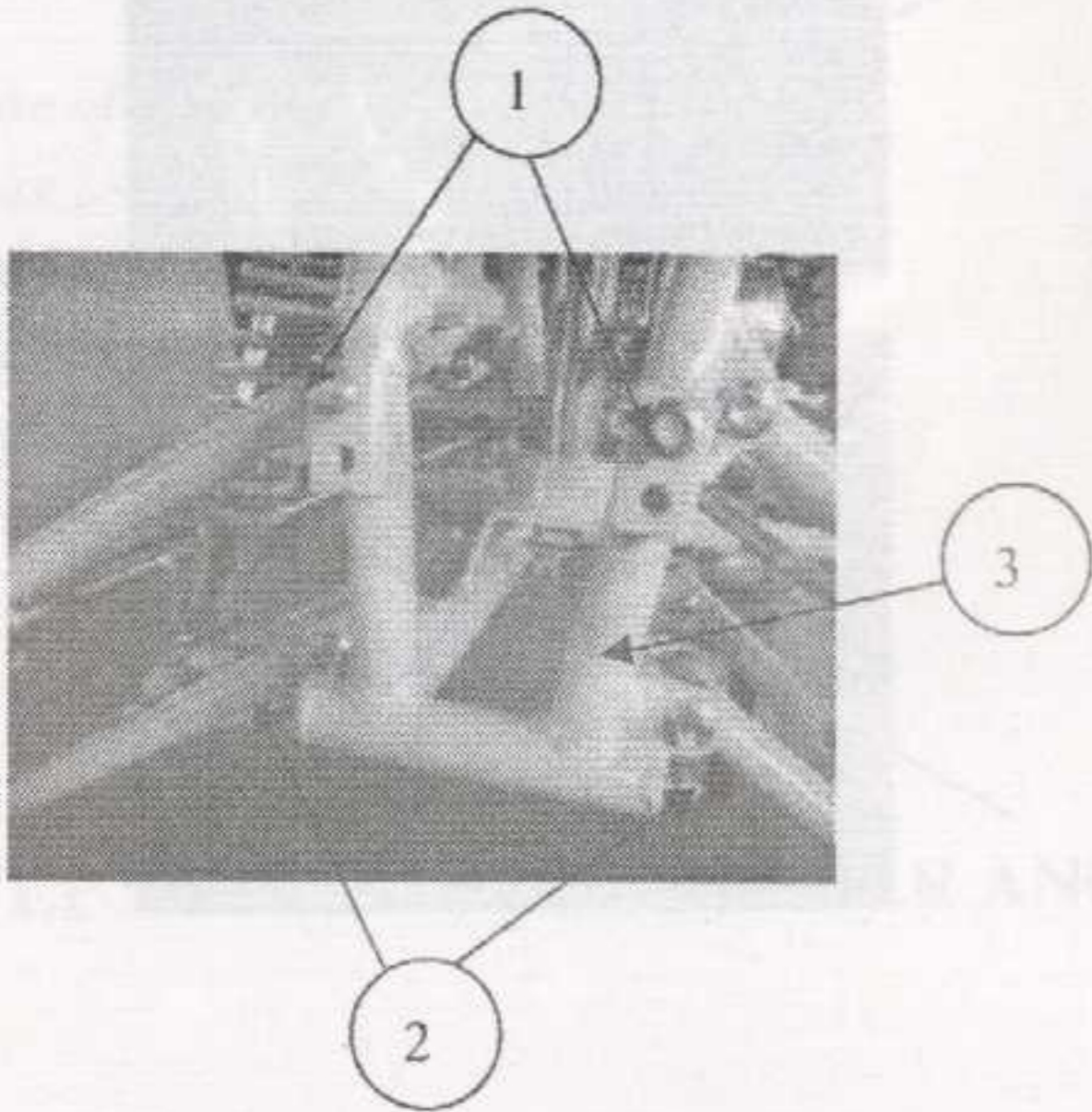
PIC 4



PIC 5

NO	DESCRIPTION	SIZE	REMARK
1	STEERING POLE		On the bike
2	STEERING HANDLE		On the bike
3	IGNITION SWITCH		On the bike
4	LOWER HOLDER,STEERING HANDLE	2pcs	On the bike
5	UPPER HOLDER,STEERING HANDLE	2pcs	On the bike
6	FRANGE SCREW	M8*55(2pcs)	On the bike
7	FRANGE SCREW	M8*55(2pcs)	On the bike

- 1.Put 4 on 1,as PIC 1
- 2.Put 2 on 4,as PIC 2
- 3.Put 5 on 2 and fix 6 with it,as PIC 3
- 4.Put 3 on 5 and fix 7 with it,as PIC 4
- 5.Lock 6 and 7,Make sure put 2 in the middle of 1

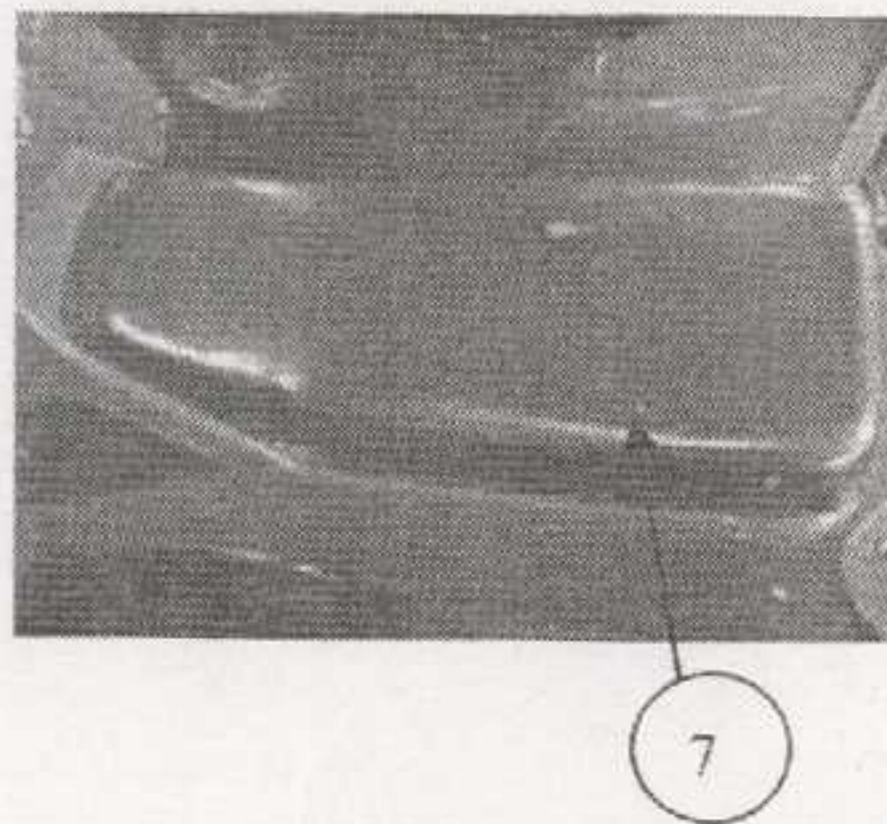
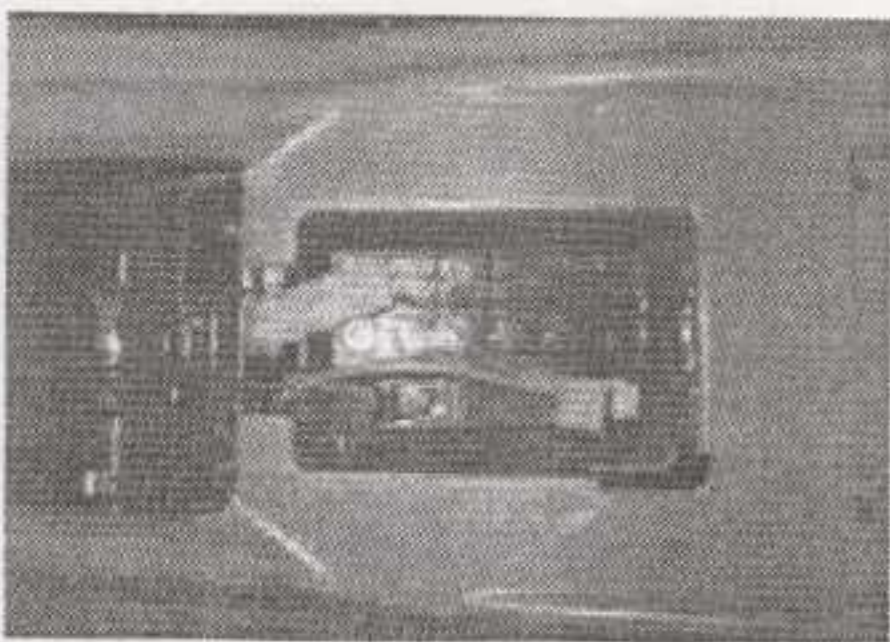
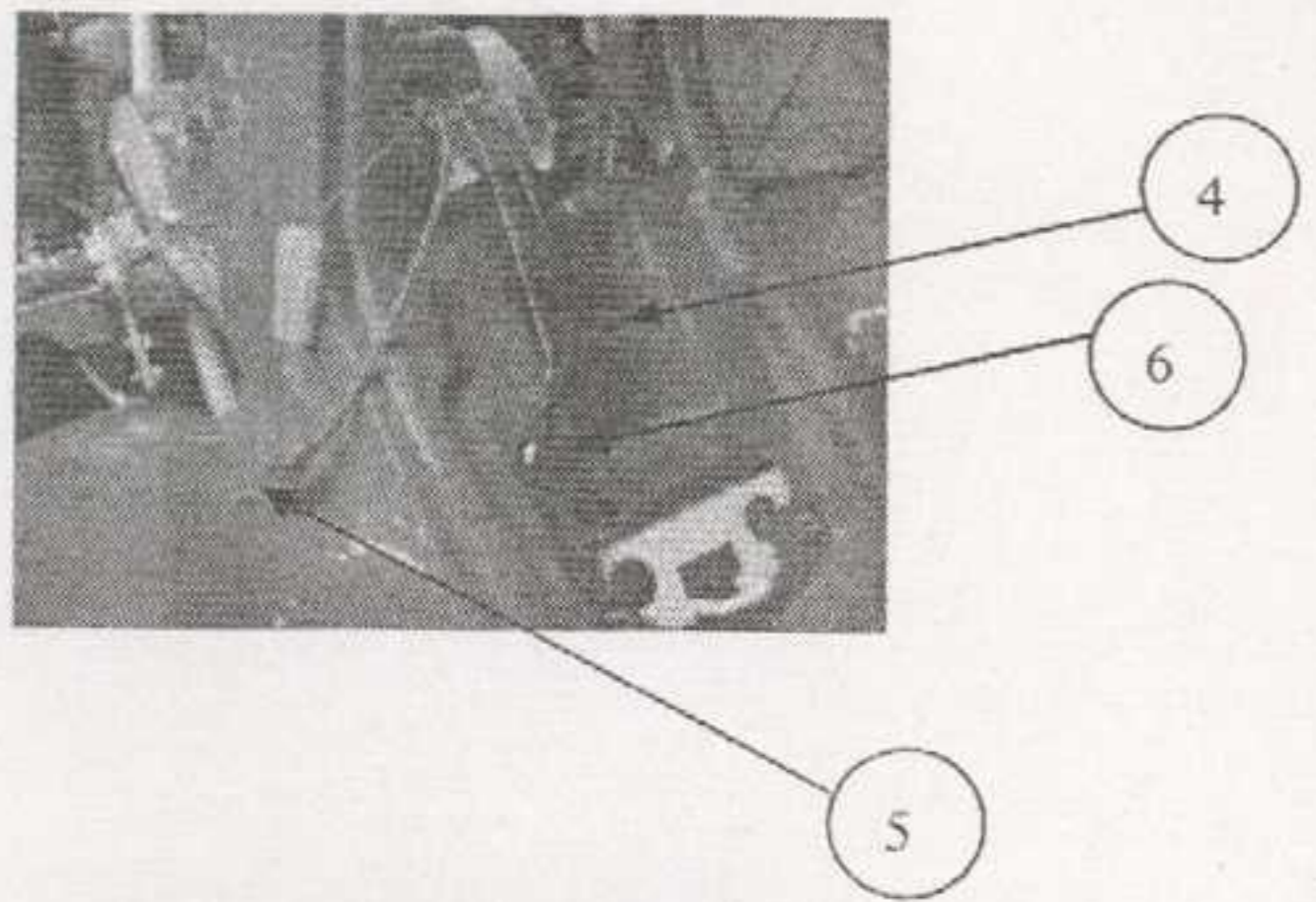
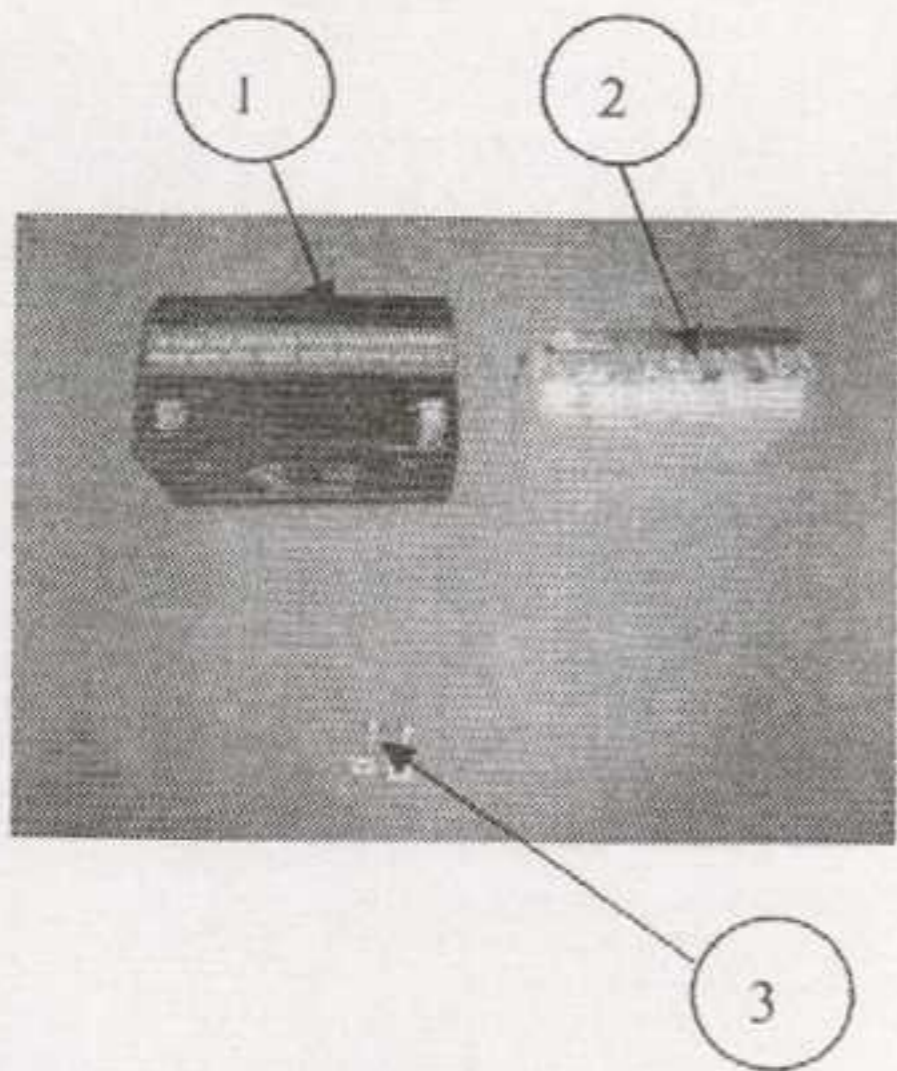


PIC 1

NO	DESCRIPTION	SIZE	REMARK
1	FRANGE SCREW	*M8*16(2pcs)	On the bike
2	FRANGE SCREW	*M8*16(2pcs)	On the bike
3	FRAME		On the bike
4	FRONT BUMPER		On the bike

1.Take out 1 and 2 from 3

2.Fix 4 on 3 with 1 and 2,then lock it



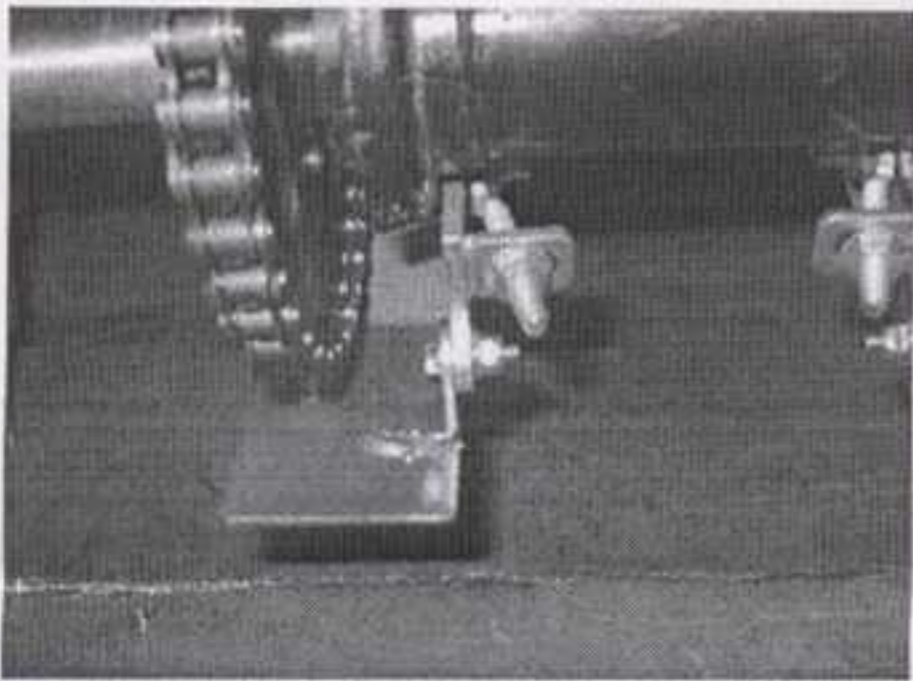
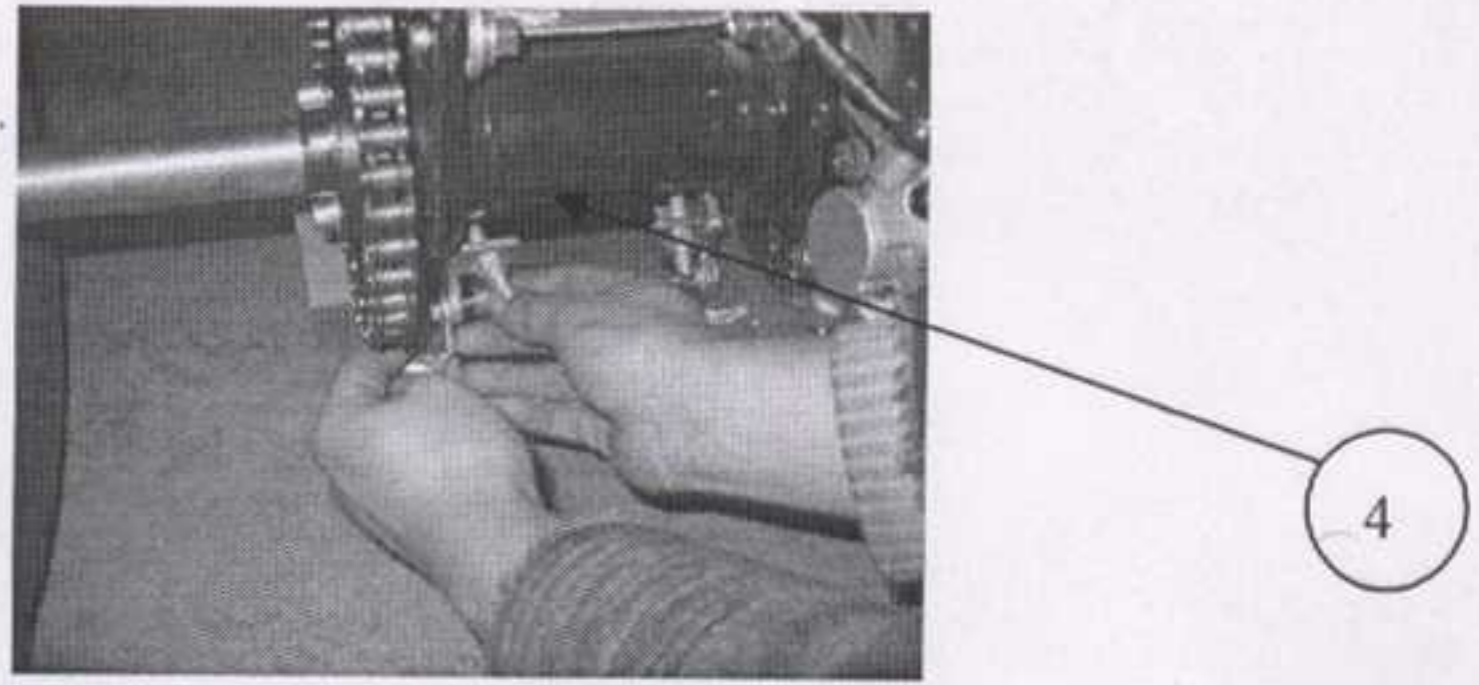
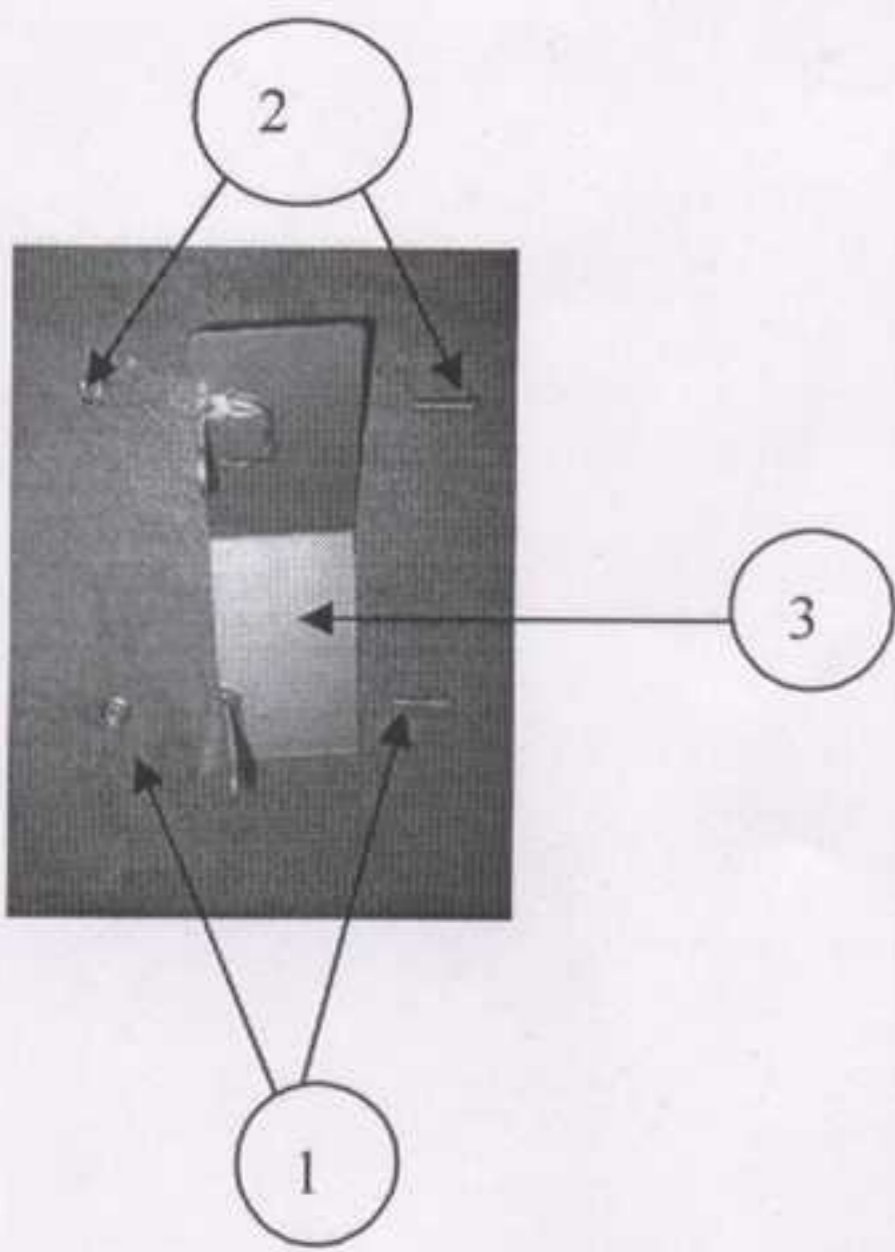
PIC 1

NO	DESCRIPTION	SIZE	REMARK
1	Battery		In the box
2	Battery electric liquid		In the box
3	Battery screw	2pcs	In the box
4	Battery seat		On the bike
5	Red line(+)		On the bike
6	Black line(-)		On the bike
7	Seat		On the bike

1. Fill 2 in 1 follow the electric liquid, please according to the user manual in the battery box
2. Put 1 into 4
3. Connect 5 and 6 with 1 used 3.

ATTENTION: make sure the red wire connect with +, and the black wire with -, as PIC 1

4. Put 7 on the bike



PIC 1

NO	DESCRIPTION	SIZE	REMARK
1	Screw	M8*20	
2	Screw	M6*20	
3	WHEEL CHAIN PROTECT		On the bike
4	FORK		On the bike

1. Use 1 get throught 3 and fix on 4,as PIC 1  
The same operate of 2

**Attention:**

**ATV tyre is bleeding in order to save space for packaging,please fill gas before operation under air pressure 170-210Kpa.**