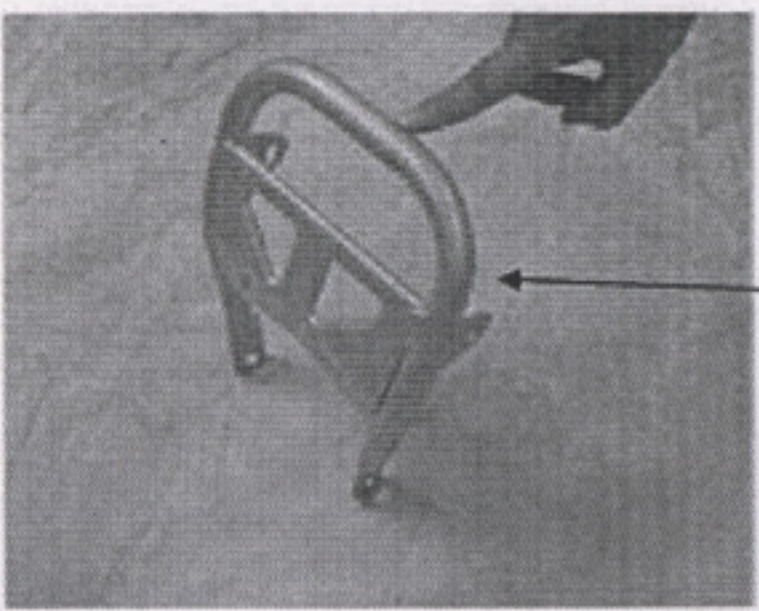
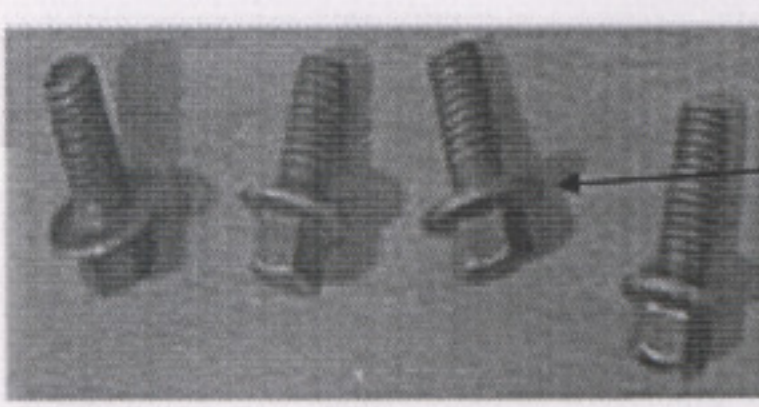


①



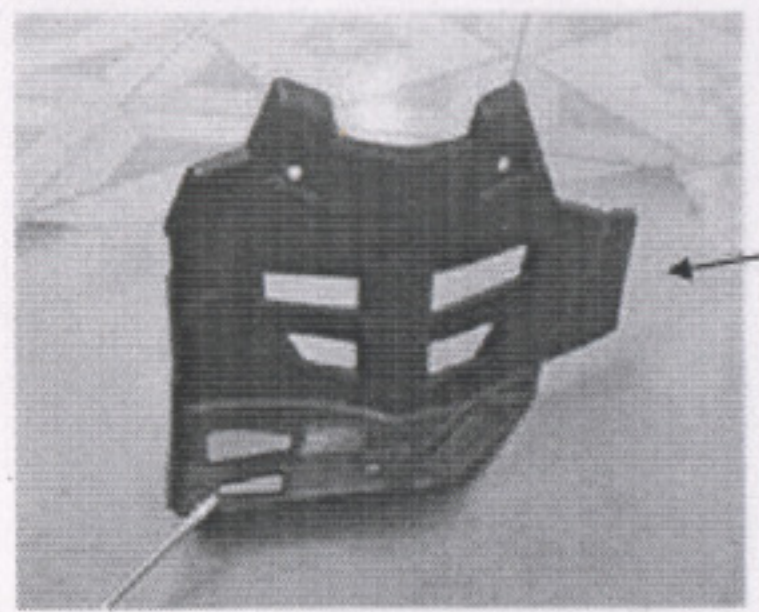
②



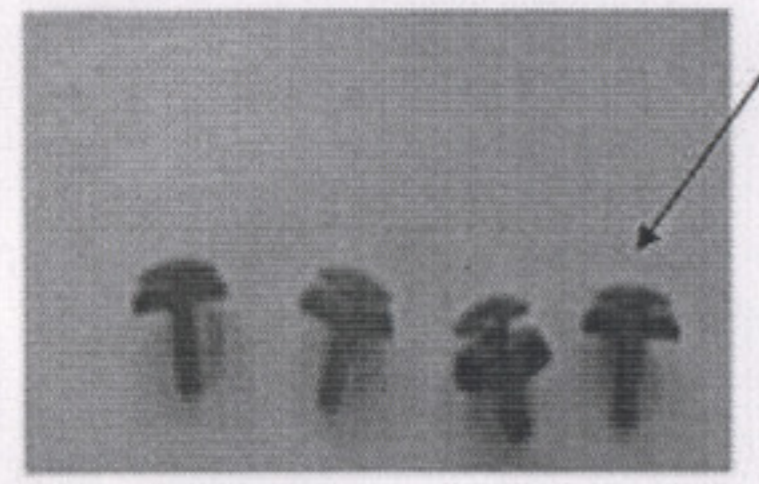
③

S/N	NAME	QTY	MODEL	REMARK
①	FRAME	1		ON THE ATV
②	FRONT HUMPER	1		ON THE ATV
③	BOLT	4	M8×20	ON THE ATV

- STEPS:
1. GET OUT OF ③ FROM ①:
 2. FIX ② ON ① BY ③.



①

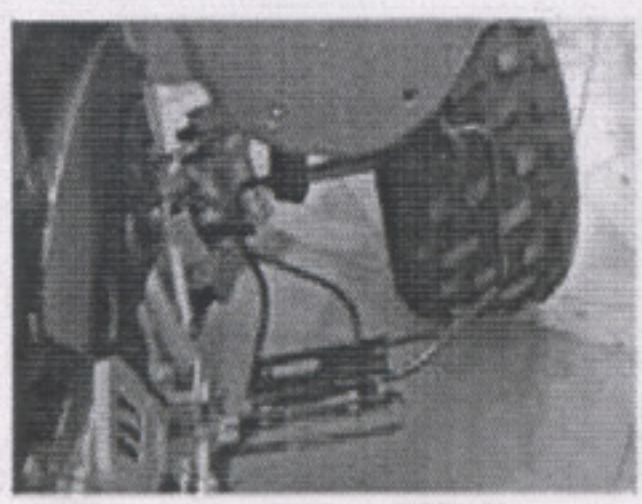


②

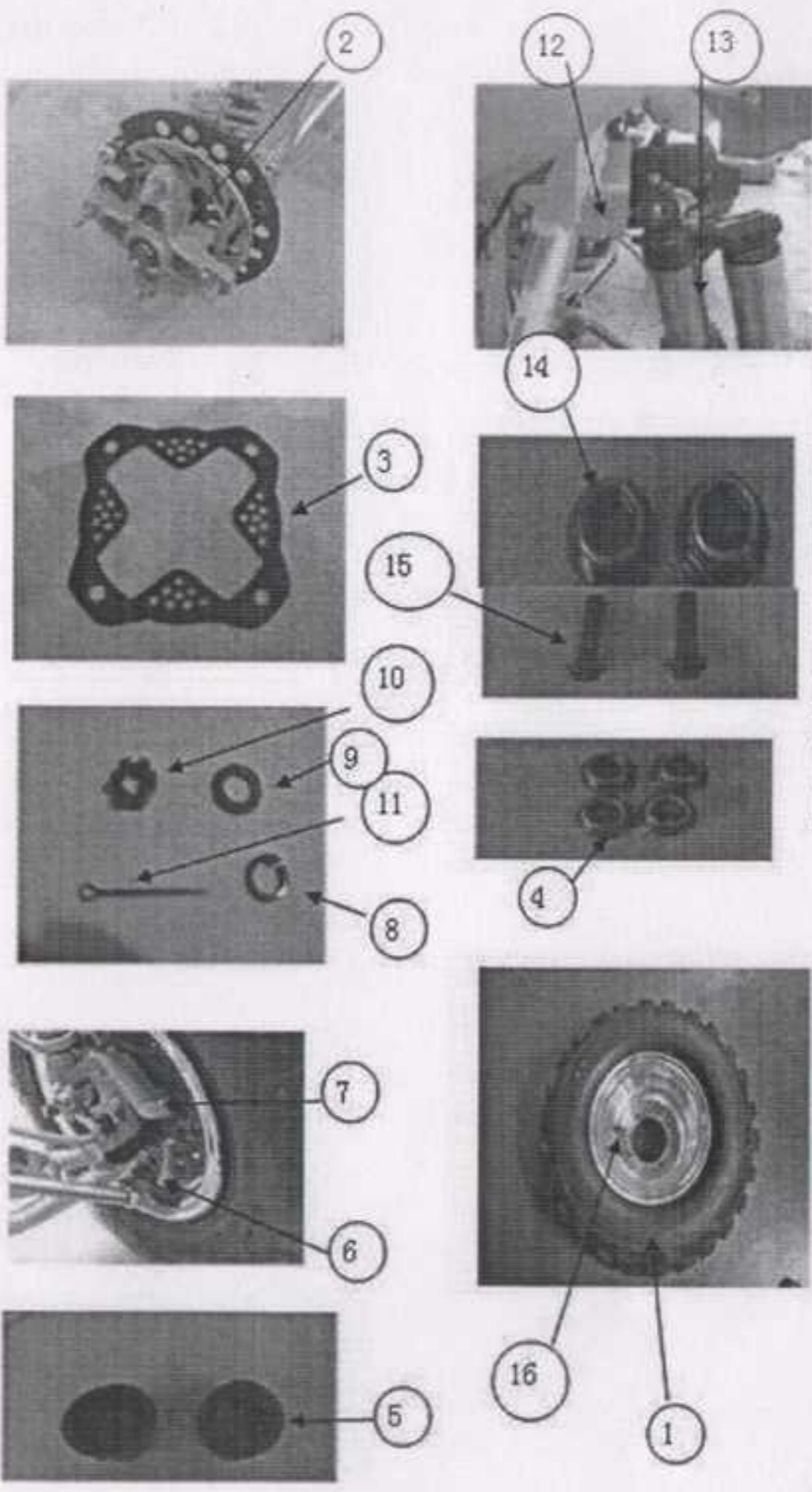
STEP THREE: INSTALLATION INSTRUCTION OF FOOTREST BOARD

SN	name	QTY	model	remark
①	FOOTREST BOARD	1		ON THE ATV
②	NUT	4	M6×16	ON ③
③	FOOTREST BOARD BRACKET	1		ON THE ATV

- STEPS:
1. GET OUT OF ② FROM ③:
 2. FIX ① ON ③ BY ②.
- TOOL: SCREWDRIVER OF CLUB STYLE.



③



STEP FOUR: INSTALLATION INSTRUCTION OF FOR FRONT WHEELS

S/N	NAME	QTY	MODEL	REMARK
①	FRONT WHEEL	1		ON THE ATV
②	CONNECTING PLATE OF FRONT WHEEL	1		ON THE ATV
③	DETECTOR OF FRONT BRAKE DISC	2		IN THE ACCESSORIES BOX
④	NUT	8	M10	IN THE ACCESSORIES BOX
⑤	DUST-PROOF-COVER	2		IN THE ACCESSORIES BOX
⑥	TIE ROD ASSY	1		ON THE ATV
⑦	STEERING PARTS	1		ON THE ATV
⑧	SPRING MAT	1	Φ 10	IN THE ACCESSORIES BOX
⑨	PLATE MAT	1	Φ 10	IN THE ACCESSORIES BOX
⑩	NUT	1	M10	IN THE ACCESSORIES BOX
⑪	COTTER PIN	SMALL MODE 2		IN THE ACCESSORIES BOX
⑫	CONNECTING PLATE OF FRONT SHOCKER ASSEMBLY	1		ON THE ATV
⑬	FRONT SHOCKER ABSORBER	1		ON THE ATV
⑭	BOLT	1	M10×45	IN THE ACCESSORIES BOX
⑮	NUT	1	M10	IN THE ACCESSORIES BOX
⑯	VALVE	1		ON THE ATV

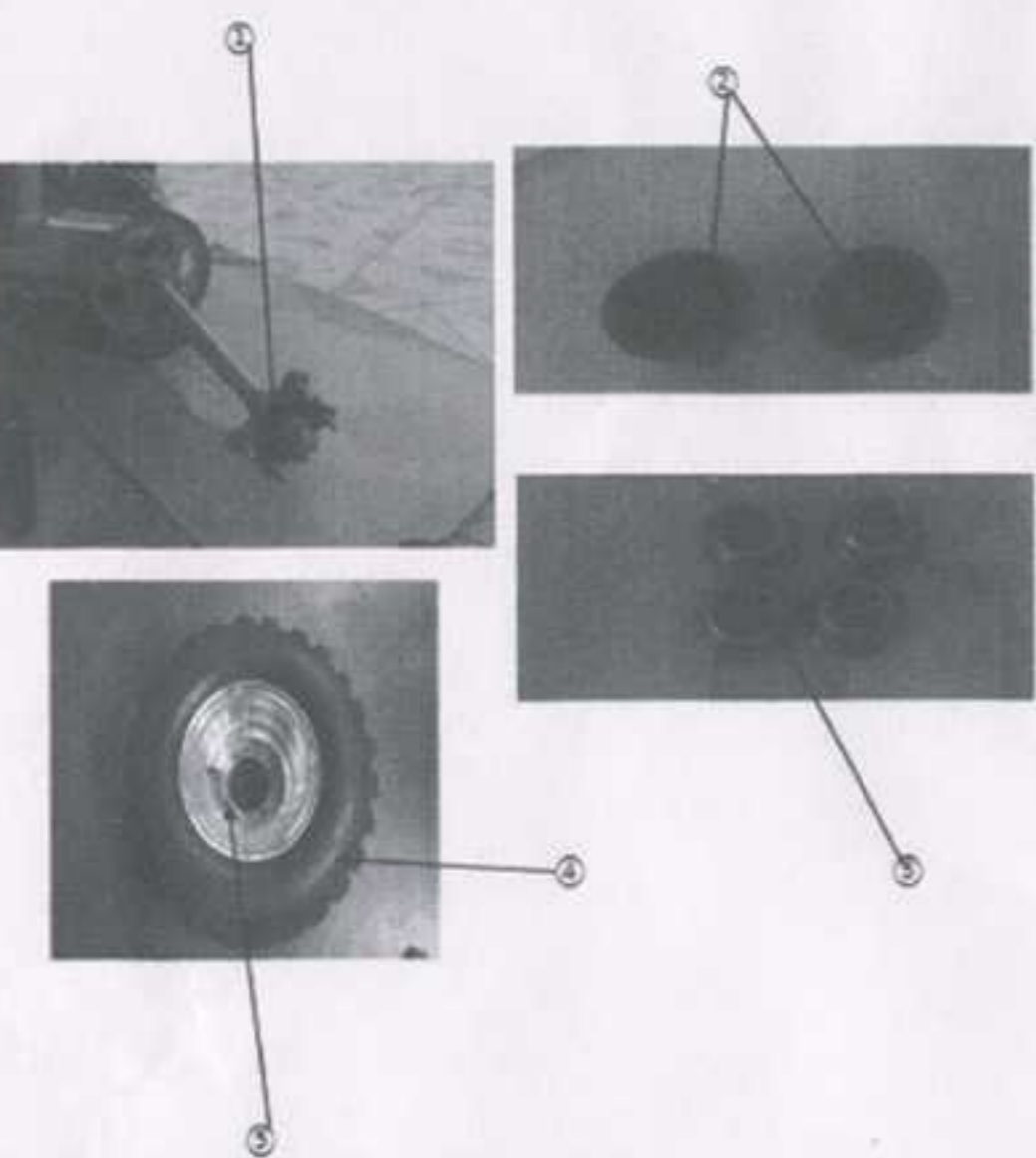
STEPS:

1. FIX ⑥ ON ⑦, THEN USE ⑧、⑨、⑩ TO FIX IT, AND INSERT ⑪ INTO ⑥;
2. FIX ③ ON ②, FIX ① ON ② BY ④.
3. FIX ⑬ ON ⑫ BY ⑭ ⑮
4. FIX ⑤ ON ②

TOOLS: SCREWDRIVER OF CLUB STYLE.

ATTENTION: THE STEP OF RIGHT AND LEFT ASSEMBLING IS THE SAME, ⑯ TO OUTSIDE.

TOOL: 14# CROSS-POINT SCREWDRIVER AND WRENCH



STEP FIVE: INSTALLATION INSTRUCTION OF FOR REAR WHEELS

S/N	NAME	QTY	MODEL	REMARK
①	CONNECTING PLATE OF REAR WHEEL	1		ON THE ATV
②	DUST-PROOF-COVER	2		IN THE ACCESSORIES BOX
③	NUT	4	M10	IN THE ACCESSORIES BOX
④	REAR WHEEL	1		ON THE ATV
⑤	VALVE	1		ON THE ATV

STEP:

1. FIX ④ ON ① BY ③;
2. BUTTON ② ON ①.

ATTENTION : THE STEP OF RIGHT AND LEFT ASSEMBLING IS THE SAME , ⑤ TO OUTSIDE.
TOOL: 14# CROSS-POINT SCREWDRIVER AND WRENCH(M14)

STEP SIX: INSTALLATION INSTRUCTION OF BATTERY

S/N	NAME	QTY	MODEL	REMARK
①	BATTERY ELECTROLYTE	1		IN THE ACCESSORIES BOX
②	BATTERY ASSY ,	1	12N9-BS	IN THE ACCESSORIES BOX
③	RUBBER PLUG	1		IN THE ACCESSORIES BOX
④	BATTERY BOX	1		ON THE ATV
⑤	BATTERY CABLE	2		ON THE ATV
⑥	PRESSURE BLOCK OF BATTERY	1		IN THE ACCESSORIES BOX

STEPS:

- 1 PUT ① INTO ② ACCORDING TO BATTERY ELECTROLYTE INSTRUCTION AND CLOSE IT BY ③.
- 2 PUT ② INTO THE RIGHT PLACE OF ④.
- 3 CONNECTING ⑤ WITH ②.
- 4 FIX ② ON ④ BY ⑥ .

ATTENTION: BATTERY HAS ANODE AND CATHODE , BATTERY CABLE HAS RED CABLE AND GREEN CALBE. THE RED CABLE SHOULD



①

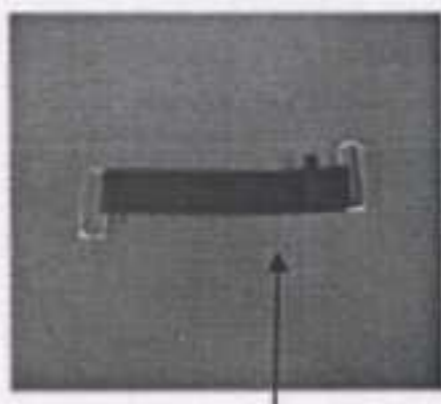


④

⑤



②



⑥



③